

LOC I-BJC <b>111.7</b>	APP CRS <b>293°</b>	Rwy 29R Idg TDZE Apt Elev	<b>9000</b> <b>5595</b> <b>5670</b>	Rwy 29L Idg TDZE Apt Elev	<b>7004</b> <b>5625</b> <b>5670</b>
---------------------------	------------------------	---------------------------------	---	---------------------------------	---

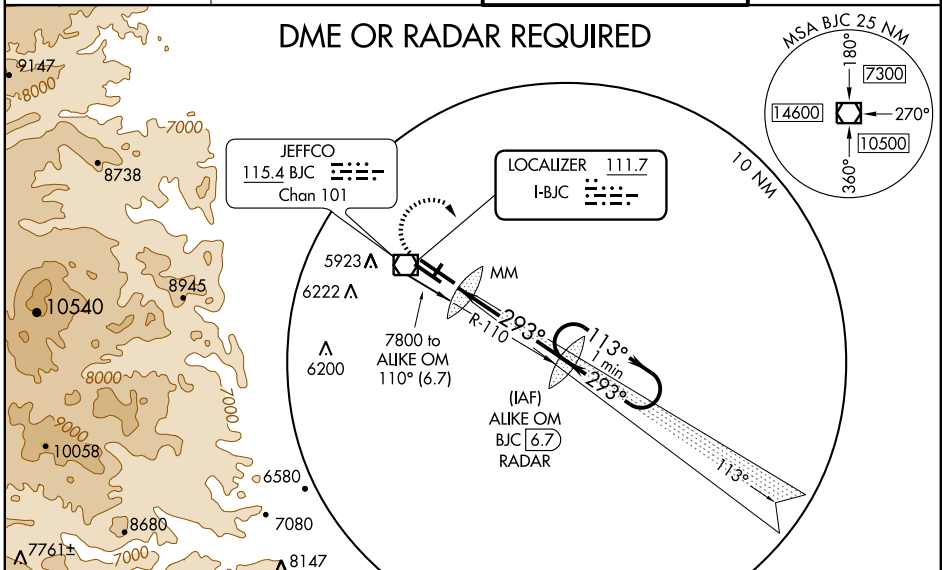
DENVER/  
ROCKY MOUNTAIN METROPOLITAN (BJC)

# ILS or LOC RWY 29R

<p><b>⚠</b> When control tower closed use Denver Intl altimeter setting. For inoperative MALS/R, increase S-LOC 29R Cat. D visibility ¼ mile; and increase Denver Intl altimeter setting S-ILS 29R Cats. A, B, C, D visibility ½ mile.</p>	MALS/R	MISSED APPROACH: Climb to 6300 then climbing right turn to 7200 via BJC VOR/DME R-110 to Alike OM/BJC 6.7 DME/RADAR and hold.

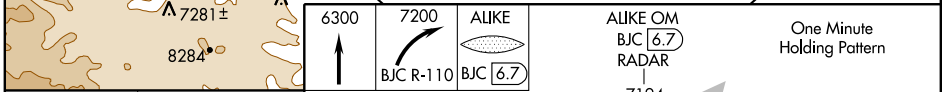
ATIS <b>126.25</b>	DENVER APP CON <b>126.1 360.75</b>	METRO TOWER* <b>118.6 (CTAF) 0 233.7</b>	GND CON <b>121.7</b>
-----------------------	---------------------------------------	---	-------------------------

## DME OR RADAR REQUIRED

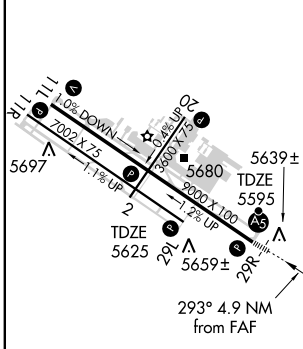


SW-1, 02 AUG 2007 to 30 AUG 2007

SW-1, 02 AUG 2007 to 30 AUG 2007



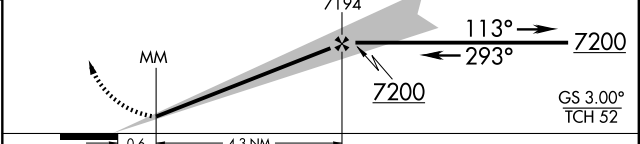
ELEV 5670



REIL Rwy 11L, 11R and 29L  
MIRL Rwy 2-20, 11R-29L and 11L-29R

FAF to MAP 4.9 NM

Knots	60	90	120	150	180
Min:Sec	4:54	3:16	2:27	1:58	1:38



CATEGORY	A	B	C	D
S-ILS 29R	5795-½ 200 (200-½)			
S-LOC 29R	5900-½ 305 (300-½)		5900-¾ 305 (300-¾)	
SIDESTEP 29L	5920-1 295 (300-1)	5920-1½ 295 (300-1½)		5920-2 295 (300-2)
CIRCLING	6180-1 510 (600-1)	6240-1½ 570 (600-1½)		6240-2 570 (600-2)
DENVER INTL ALTIMETER SETTING MINIMUMS				
S-ILS 29R	5877-½ 282 (300-½)			
S-LOC 29R	5980-½ 385 (400-½)		5980-¾ 385 (400-¾)	
SIDESTEP 29L	6000-1 375 (400-1)	6000-1½ 375 (400-1½)		6000-2 375 (400-2)
CIRCLING	6260-1 590 (600-1)	6320-1¾ 650 (700-1¾)		6320-2 650 (700-2)